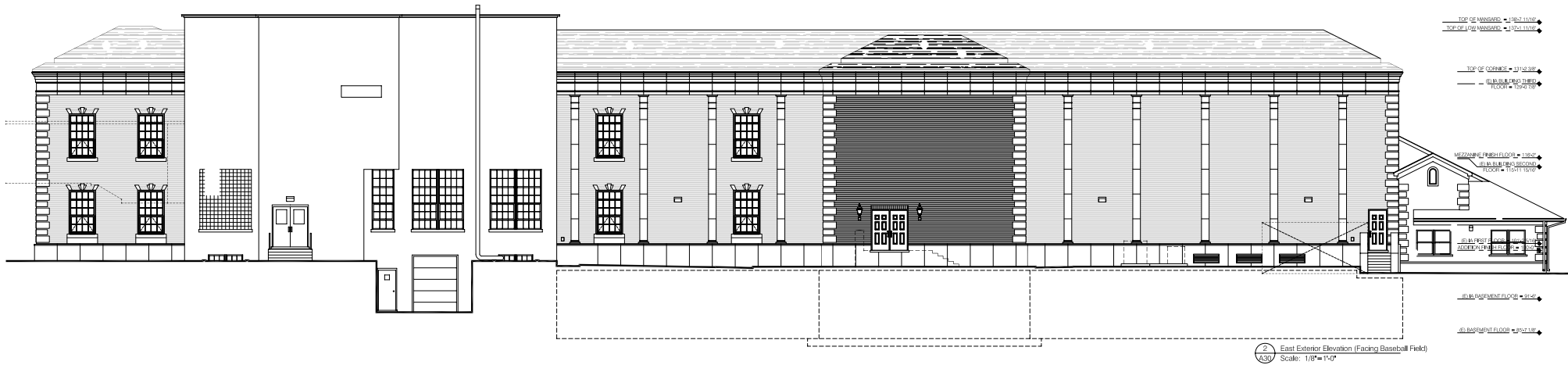


1 West Exterior Elevation (Facing Fisher Rd)
Scale: 1/8" = 1'-0"



2 East Exterior Elevation (Facing Baseball Field)
Scale: 1/8" = 1'-0"

Sub-contractor Bidding: 05 March 07
CM Bidding: 01 February 07

Scale: 1/8" = 1'-0"

Exterior Elevations

Ehresman Associates Inc.
architects engineers

803 West Big Beaver Road Suite 350
Troy, Michigan 48064-4734
Telephone: (248) 244-9710
E-mail: ehresman@aol.com

Grosse Pointe Public School System
Grosse Pointe South High School
Pool & Field Gymnasium Addition/Alteration

A30 2706

© Ehresman Associates, Inc. 2006